

Weekly Newsletter for March 2-8

Flyers are to be delivered each weekend by 4pm Sunday evening.

Didn't receive your newsletter this weekend?

Please call Kristy Boucher at 623-9543 ext.217 or

info@fwfn.com with your questions or concerns.

Finance Information Page For:

- **Direct Deposit Forms for Member Distributions**
- **Youth Turning 18 – Direct Deposit Forms**
- **Late Banking Information – Annual Member Distributions**
- **Are You Making a Payment?**

Is now on Page 2 of our Weekly Newsletter

Stay informed, follow us on:



@fortwilliamfirstnation



@FWFN1

NOTICE TO ON RESERVE HOUSEHOLDS WITH DOGS

Letting your dog run loose, puts them and the community members in danger.

It is up to the pet owner to control their pets, and protect others from them. Pet owners can be held accountable if their pet hurts someone.

Please be advised that Flyer Carriers have the right to refuse delivery to the household in they encounter a dog or dogs in the area that makes them feel unsafe.

Direct Deposit Forms for Member Distributions

Please keep your banking information up-to-date with Finance. If you change your financial institution or have not yet provided any banking information to Finance, the following options are available to submit your Direct Deposit Information:

1. Mail in a sample VOID cheque from your chequing account that has your current address information on it. Please enclose a brief note such as “**Please update my direct deposit information**”, **sign and date** this note and provide your phone number in case we need to contact you.
2. If you have online banking, you can print out your own Direct Deposit form, **sign and date it**, print your address and phone number on it and mail it to FWFN Finance.
3. You can also visit your financial institution and have them fax FWFN Finance directly at (807) 623-5190 your direct deposit form after you signed and dated it. The fax must be faxed from the financial institution and cannot be faxed from a third-party fax number. Please note, some financial institutions provide this fax service and some do not. In the event they do not, you will need to mail this direct deposit form to us, as we will require your **original signature**.
4. Please note – Finance does not process any banking updates by e-mail or pictures.
5. If you are providing your banking information for FWFN employee payroll purposes, you will need to consent to release this information from FWFN Payroll to share this information to FWFN Accounts Payable and you will need to sign and date this form along with FWFN Payroll sign off.

Youth Turning 18 - Direct Deposit Forms

Please provide your direct deposit information as noted above at least 1-week in advance of your birthday. Please contact Ed Collins/Trustee directly relating to youth funds held in trust with the Specific Claim Housing Trust at cell (807) 356-1970 to arrange any payment of youth funds due to you.

Late Banking Information – Annual Member Distributions

Any revised direct deposit information received after a member distribution will be processed on the 3rd – Friday of each month thereafter. Please provide no later than the Wednesday before the 3rd Friday to ensure any amounts owing to you are processed on the 3rd Friday. Otherwise, your payment may not be processed until the following month's 3rd Friday.

Are You Making a Payment?

Any member or customer making a payment (rent, ice rental, arena gym memberships, hall rental, hunting/fishing licenses, craft tables, Health Fair, Good Food Box, Pow Wow vendors, any other payments), Fort William First Nation Reception (2nd Floor of Band Office) must issue you an official pre-numbered FWFN receipt at the time of your payment.

FWFN Reception can now also process your payment by **debit/credit card** (Visa, MasterCard, American Express, and Discover). You may also make your payment FWFN Reception by cash or cheque, you may also mail in your cheque payment to the address noted below. Please reference your invoice number or rental unit address for rental payments.

FWFN Arena can process receipts if you are paying for your ice by cheque, debit or credit card. The Arena no longer processes cash. If you are paying your ice rental by cash, please see FWFN Reception to have your official pre-numbered FWFN receipt issued to you.

Fort William First Nation – Reception is located on the 2nd floor, Suite 200 at 90 Anemki Drive.

Questions regarding the above can be addressed to Lori Payne, CPA, CA – A/Director of Finance.



Department: Human Resources Office

Date Prepared: February 28, 2020

Subject: CEO Announcement

Prepared by: Michele Blais

It is my pleasure to announce that Michael Pelletier JR. will be joining Fort William First Nation on March 9, 2020 in the position of Chief Executive Officer.

We will be having a staff breakfast on March 9th to welcome Michael (back) to the team. More details will follow regarding the breakfast.

Respectfully,

Michele Blais, Human Resources Manager

End of Memorandum

Date	Event
Sunday, March 1	AZ/DZ Training - 8:30AM - 4:30 PM - TARANIS (Runs until the 6th)
Monday, March 2	Staff Meeting - Prep. for upcoming week Upward Bound Tutoring - Community Centre (Kindergarten Classrom) 4:15PM - 5:45PM Morning Smudge Regular Programming
Tuesday, March 3	Drop-In Programming - 1:00PM - 3:00PM Early Years Program Drop-In - Family Centre - 1:00PM - 3:00PM Regular Programming Sew Connected - Afternoon Youth Sewing Social - 4:00PM - 6:00PM Yoga4All - Gym - 12:00PM - 1:00PM Karate - Gym - 6:00PM - 7:00PM After School Program 4:00PM - 6:00PM Climate Change Work Shop #5 - 6:30PM - 8:30PM
Wednesday, March 4	ODSP On Site - 1:00PM - 4:00 PM Drop-In Programming - 1:00PM - 3:00PM Early Years Program Drop-In - Family Centre - 1:00PM - 3:00PM Upward Bound Tutoring - Community Centre (Kindergarten Classrom) 4:15PM - 5:45PM Land Based Learning Day - Root Harvesting - 1:00PM - 4:00PM Anishinaabemowin (Ojibwa Language) - 7:00PM - 9:00PM Science North - 4:00PM - 6:00PM Right to Play : Youth Leadership - 6:30PM - 8:30PM
Thursday, March 5	Drop-In Programming - 1:00PM - 3:00PM Early Years Program Drop-In - Family Centre - 1:00PM - 3:00PM Regular Programming Julie Away (PM) Yoga4All - Gym - 12:00PM - 1:00PM Karate - Gym - 5:00PM - 6:00PM After School Program - 4:00PM - 6:00PM Drop In Night- 6:30PM - 8:30PM
Friday, March 6	INFO SESSION - 10:30AM & 1:30PM Drop-In Programming - 1:00PM - 3:00PM Early Years Program Drop-In - Family Centre - 1:00PM - 3:00PM Movie/ Game Night 5:30PM - 8:30PM
Saturday, March 7	Pow Wow Social (Gymnasium) 6:00PM - 9:00PM
Sunday, March 8	

Event Key:

Social Services - Ontario Works

Health Centre

Family Centre

Education Department

FWFN NIIGAANAABDA (located in the Community Centre)

Culture Department

Recreation

Youth Centre 10 - 12 Years

Youth Centre 13 - 17 Years

Date	Event
Monday, March 9	Staff Meeting - Prep. for upcoming week
	Family Night - Community Hall - 4:30PM - 6:30PM
	Upward Bound Tutoring - Community Centre (Kindergarten Classrom) 4:15PM - 5:45PM
	Morning Smudge
	Regular Programming
Tuesday, March 10	Family Food Bank 11:00 AM - 5:00 PM
	Drop-In Programming - 1:00PM - 3:00PM
	Early Years Program Drop-In - Family Centre - 1:00PM - 3:00PM
	Upward Bound Tutoring - Community Centre (Kindergarten Classrom) 4:15PM - 5:45PM
	Regular Programming
	Sew Connected - Afternoon
	Youth Sewing Social - 4:00PM - 6:00PM
	NO YOGA
	Karate - Gym - 6:00PM - 7:00PM
	Prevention - 4:00PM - 6:00PM
	Climate Change Work Shop #6 - 6:30PM - 8:30PM
Wednesday, March 11	Safe Food Handling - 9:00 AM
	Drop-In Programming - 1:00PM - 3:00PM
	Land Based Learning Day - Root Harvesting - 1:00PM - 4:00PM
	Anishinaabemowin (Ojibwa Language) - 7:00PM - 9:00PM
	Right To Play: Food-ology - 4:00PM - 6:00PM
	Right to Play : Youth Leadership - 6:30PM - 8:30PM
Thursday, March 12	Safe Food Handling - 9:00 AM
	Parents and Tots Program - 11:00AM - 1:00PM
	Parents N Tots - Community Centre - 11:00AM - 1:00PM
	Regular Programming
	Sew Connected - Afternoon
	Yoga4All - Gym - 12:00PM - 1:00PM
	Karate - Gym - 5:00PM - 6:00PM
	After School Program - 4:00PM - 6:00PM
Friday, March 13	Drop In Night- 6:30PM - 8:30PM
	Smart Serve - 9:00 AM
	Drop-In Programming - 1:00PM - 3:00PM
	IWG(Individual Wellbriety Group) - Community Centre - 1:00PM - 3:00PM
Saturday, March 14	Movie/Game Night 5:30PM - 8:30PM
Sunday, March 15	
Monday, March 16	Construction Craft Worker Starts 9:00AM - 4:00 PM - Mobile Class (Runs until the 20th)
	Income Statement Week (Until the 20th)
	Staff Meeting - Prep. for upcoming week
	March Break Activity - Movies
	March Break Activities Start - See the flyer for details
	Morning Smudge
	Regular Programming

Date	Event
Tuesday, March 17	Drop-In Programming - 1:00PM - 3:00PM
	C.O.P.E. Group - Community Centre - 1:30PM - 3:00PM
	Regular Programming
	Sew Connected - Afternoon
	Youth Sewing Social - 4:00PM - 6:00PM
	NO YOGA
	Karate - Gym - 6:00PM - 7:00PM
	Crazy Hair Day! - 3:30PM - 6:00PM
	Baking & Nails- 6:30PM - 8:30PM
Wednesday, March 18	Drop-In Programming - 5:00PM - 7:00PM
	March Break Activities
	Land Based Learning Day - Root Harvesting - 1:00PM - 4:00PM
	Anishinaabemowin (Ojibwa Language) - 7:00PM - 9:00PM
	Backwards Day! - 3:30PM - 6:00PM
	Fondue Night! & Face Masks - 6:30PM - 8:30PM
Thursday, March 19	Drop-In Programming - 1:00PM - 3:00PM
	55+ Program - Community Centre - 11:00AM - 1:30PM
	Regular Programming
	Sew Connected - Afternoon
	Yoga4All - Gym - 12:00PM - 1:00PM
	Karate - Gym - 5:00PM - 6:00PM
	Movie / Pajama Night! - 4:00PM - 8:00PM
Friday, March 20	Income Statement (Last Day)
	Drop-In Programming - 1:00PM - 3:00PM
	March Break Activities
	Movie / Pajama Night - 5:30PM - 6:00PM
Saturday, March 21	
Sunday, March 22	
Monday, March 23	Heavy Equipment Training - 8:30AM - 4:00PM - TARANIS
	Grandfather & Grandmother Pipe Carving - 9:00AM (Until the 27th)
	Staff Meeting - Prep. for upcoming week
	Family Night - Community Hall - 4:30PM - 6:30PM
	Language Café - Youth Centre - 5:00PM - 7:00PM - Limited Registration: Only 30 Spots Available
	Morning Smudge
	Regular Programming
Tuesday, March 24	Drop-In Programming - 1:00PM - 3:00PM
	Early Years Program Drop-In - Family Centre - 1:00PM - 3:00PM
	Regular Programming
	Sew Connected - Afternoon
	Youth Sewing Social - 4:00PM - 6:00PM
	Yoga4All - Gym - 12:00PM - 1:00PM
	Karate - Gym - 6:00PM - 7:00PM
	Prevention - 4:00PM - 6:00PM
	Prevention - 6:30PM - 8:30PM

Date	Event
Wednesday, March 25	Drop-In Programming - 1:00PM - 3:00PM
	Early Years Program Drop-In - Family Centre - 1:00PM - 3:00PM
	Diabetes Wellness Program - Community Centre - 11:00AM - 1:30PM
	Land Based Learning Day - Root Harvesting - 1:00PM - 4:00PM
	Anishinaabemowin (Ojibwa Language) - 7:00PM - 9:00PM
	Roots to Harvest Cooking Program - 4:30PM - 7:30PM
	Roots to Harvest Cooking Program - 4:30PM - 7:30PM
Thursday, March 26	First Aid for CCW Workers
	Drop-In Programming - 1:00PM - 3:00PM
	Early Years Program Drop-In - Family Centre - 1:00PM - 3:00PM
	Hot Lunch and Monthly Draw
	Regular Programming
	Sew Connected - Afternoon
	Yoga4All - Gym - 12:00PM - 1:00PM
	Karate - Gym - 5:00PM - 6:00PM
	Famous Player Silver City - Movies
Friday, March 27	First Aid for CCW Workers
	Drop-In Programming - 1:00PM - 3:00PM
	IWG(Individual Wellbriety Group) - Community Centre - 1:00PM - 3:00PM
	Wacky Wings Arcade
Saturday, March 28	Ribbon Skirt - 11:00AM - 3:00PM
	Easter Bazaar - 1:00PM - 3:00PM
	Self Defense Father & Son - Gym - 1:00PM - 4:00PM
Sunday, March 29	Ribbon Skirt - 11:00AM - 3:00PM
	Self Defense Mother & Daughter - Gym - 1:00PM - 4:00PM
Monday, March 30	Staff Meeting - Prep. for upcoming week
	Family Night Movie Night - Community Hall - 4:30PM - 6:30PM
	Upward Bound Tutoring - Community Centre (Kindergarten Classrom) 4:15PM - 5:45PM
	Morning Smudge
	Regular Programming
Tuesday, March 31	Drop-In Programming - 1:00PM - 3:00PM
	Early Years Program Drop-In - Family Centre - 1:00PM - 3:00PM
	Regular Programming
	Sew Connected - Afternoon
	Youth Sewing Social - 4:00PM - 6:00PM
	Yoga4All - Gym - 12:00PM - 1:00PM
	Karate - Gym - 6:00PM - 7:00PM
	After School Program - 4:00PM - 6:00PM
	Prevention: Wellness - 6:30PM - 8:30PM

Program Dates are Subject to Change

Reminder Income Statements are Due on or before the 20th of each month.

Your monthly Issuance will be considered late if you don't hand in all documentation such as bills and income verifications

FWFN is currently offering a highschool completion program - held at community hall E&T Side ask for Julie to enroll.

Teacher Hours - Monday, Tuesday, Wednesday, and Thursday 9:00Am - 4:00PM - Open for on-going registrations!

Earn your high school diploma - NIGAANAABDA offers flexible hours, personalized education pathways, and one-on-one teacher support

As always available to students: Coffee, snacks, a quiet work place, computer/ internet access, printing

Sew Connected - learn how to bead and sew. Make a pair of mitts of moccasins Tuesday and Thursday afternoons.

We are open through March Break ... graduation is just 3 months away!

Teacher Contact : julieharmer77@gmail.com - (807)472-6973

Anishinaabemowin- (Ojibwa Language Program)- FWFN Community Centre Cultural Room. Every Wednesday evening from 7 – 9 pm

Elder: Laura CalmWind

Children under 12 must be with parents or guardian.

Youth Sewing Social-FWFN Community Centre - Cultural Room.

Every Tuesday evening form 4 -6 pm

Attendant: Cathy Rodger

Program designed for Children under 13. Food and Drinks are provided.

Pow Wow Social- Saturday March 7th - Gymnasium

Bring your drum, Regalia and come out and dance !!

Open for all Community Members, all ages.

(Children under 13 must be accompanied by a parent or guardian

****GYMNASIUM (GYM) LOCATED AT FWFN ARENA - LEFT SIDE OF RINK 2** - 200 Anemki Drive - Contact Bess @622-4763 or by email: besslegarde@fwf.com**

Youth are required to have a full completed registration form to attend Youth Centre Programs & Outings



FWFN INFORMATION FAIR

**WHEN: March 9, 2020
Doors Open @ 4:30 p.m.
Opening Remarks @ 5:00 p.m.
Join us until 9:00 p.m.**

WHERE: FWFN Community Centre

***** LIGHT SNACKS AND REFRESHMENTS WILL BE PROVIDED
ALONG WITH AN ATTENDANCE DRAW *****

**Informative presentations about the program & services
available to FWFN Community Members.**

- 
- Ontario Works
 - Health
 - Family Support
 - Addictions
 - Family Well-Being
 - Early Years Centre
 - Diabetes
 - Youth & Social Development
 - FWFN Fire Prevention
 - Bingo Balls Program
 - Employment & Training
 - Housing
 - Lands
 - Education
 - Public Works
 - Communications

MENS
TALKING CIRCLE

PLACE: FWFN HEALTH CENTRE

DATE: WED. MARCH 11, 2020

TIME: 5:00 PM TO 7:00 PM

WOMENS
TALKING CIRCLE

PLACE: FWFN HEALTH CENTRE

DATE: WED. MARCH 25, 2020

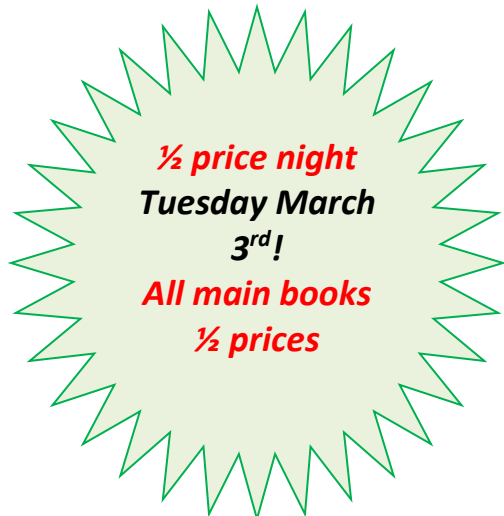
TIME: 5:00 PM TO 7:00 PM

**LIGHT SNACK AND REFRESHMENTS WILL BE
SERVED.**

**For more information please contact Rebecca Arthur-
Family Wellbeing Worker@ 622-8802 ext. 808**



March 2020 Events



**WHACKY
WEDNESDAYS**

**ALL SPECIAL
BOOKS ½ PRICE!**



**WHACKY
WEDNESDAYS**

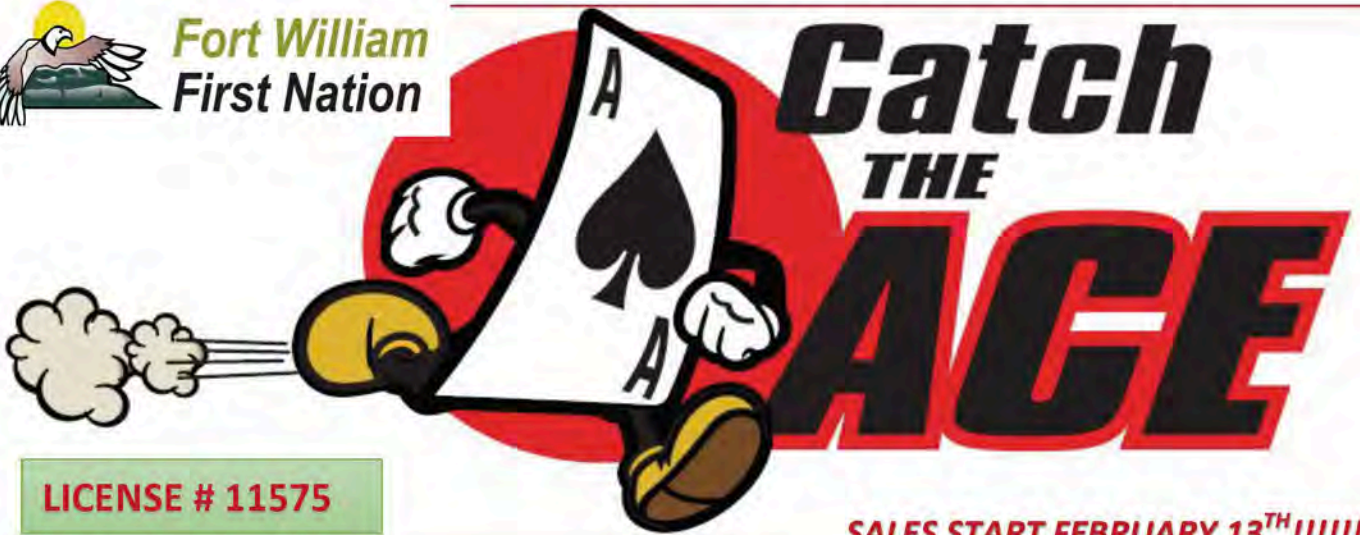
**ALL SPECIAL
BOOKS ½ PRICE!**



For More Information visit our website @ mountainbingo.com
Thank you for your continued support!



**Fort William
First Nation**



LICENSE # 11575

SALES START FEBRUARY 13TH!!!!!!

FIRST DRAW FEBRUARY 20TH!!!!!!

What is "Catch the Ace"

- A weekly raffle draws with a progressive part to it
- Every Thursday @ 2pm tickets will be all placed in a drum and a winner selected for that week's prize, and a chance for the progressive draw
- When you purchase a ticket you also choose an envelope number where you think the ACE of spade is, find it and win the progressive pot as well!
- All draws will be recorded and can be found on our Facebook page FWFN Catch the Ace
- All draws will occur at the FWFN Community Center every Thursday at 2pm!

What are the proceeds used for?

Every year FWFN puts on several events within our community. Those include:

- Culture Department/Activities
- Recreation department/Activities
- Youth Programs
- Annual Pow wow
- Fall Pow wow
- Family Day Event
- Anemki Unity Winter Classic Hockey Tournament
- And Many Many More!

The funds generated from these raffles will offset the costs associated or enhance these events to provide more!

Among the events we hold we also provide Culture and Recreation Programs throughout the year for all ages from kids up to elders.

Where can you buy your tickets?



**Fort William
First Nation**
Mountain Bingo

FWFN MOUNTAIN BINGO
CALENDAR OF EVENTS

(807)622-5914 HOTLINE



March 2020

Sunday

Monday

Tuesday



Wednesday

Thursday

Friday

Saturday

1	2	3 ½ PRICE NIGHT	4 Whacky Wednesday	5	6	7 CLOSED
8	9 CLOSED	10	11 Whacky Wednesday	12	13	14 CLOSED
15	16 CLOSED	17 ST. PATTY'S DAY	18 Whacky Wednesday	19	20 DRAW NIGHT	21 CLOSED
22 \$23,000.00 MINI MONSTER BINGO	23 CLOSED	24	25 Whacky Wednesday	26 Player Appreciation Night	27	28 CLOSED
	CLOSED					

Sunday	Monday	Tuesday	Wednesday	Thursday	Friday	Saturday
1	2	3	4	5	6	7
	<div>AZ/DZ TRAINING 8:30AM-4:00PM 5 WKS - TARANIS</div>		<div>ODSP ON SITE 1-4PM</div>		<div>INFO SESSION 10:30 & 1:30</div>	
8	9	10 FAMILY FOOD BANK 11AM-5PM	11	12 RESUME/ COVER LETTER WORKSHOP 10:00AM	13	14
						
15	16	17 SINGLES FOOD BANK 11AM-4PM	18	19 ODSP ON SITE 1-4PM	20	21
<div>CONSTRUCTION CRAFT WORKER 7 WEEKS</div>					<div>PODCAST/ AUDIO JOURNALISM FRIDAYS @10AM-3:30PM</div>	
<div>9:00AM-4:00PM- MOBILE CLASS</div>		<div>Income Statement Week</div>	<div>Income Statement Week</div>	<div>Income Statement Week</div>	<div>Income Statement LAST DAY</div>	
22	23	24 GRANDFATHER & GRANDMOTHER PIPE - CARVING 9:00AM	25 SMART SERVE 9:00AM	26 SAFE FOOD HANDLING 9:00AM		28
<div>HEAVY EQUIPMENT TRAINING 8:30AM-4:00PM-TARANIS</div>				<div>FIRST AID FOR CCW WORKERS</div>	<div>FIRST AID FOR CCW WORKERS</div>	<div>EASTER BAZAR</div>
29	30	31	APRIL CHEQUE DAY			
<div>EASTER EGG HUNT & BRUNCH 11:00AM</div>						

Fort William First Nation Calendar Details

Resume Building – Participants will have the option of attending a workshop on how to develop a resume and cover letter.

Interview Skills Drop In- Learn and practice job interview skills and techniques; help make clients more comfortable and confident when going to a Job interview.

Addiction Services (AS) - is a program that assists recipients who have an addiction to alcohol or drugs, which pose a barrier to employment. With the assistance of specialized staff, the goal of participants is to address their barriers to employment and work towards financial independence.

Wellness Services- Working with participants on a holistic approach to healing.

Family Food Bank- Food hampers for OW/ ODSP families with children under the age of 18yrs.

Single Food Bank- For OW/ ODSP clients or low income singles that live on FWFN that do not fit the criteria for family food bank, food is given out on a first come first serve basis. It is one hamper per address. For information call 622-6791.

High School Diploma – If you are interested in obtaining your Grade 12 diploma or need High school credits to complete your diploma, FWFN offers school for adults at our local FWFN Community Centre, if you need assistance please let your employment worker know or go drop in to see the Teacher in the classroom at the Community Centre her name is Julie.

Community EATS- This program is a way for the Ontario Works department to deliver information to our participants and the community in an informal setting while sharing a meal together that we prepare for the Community. We will bring in different guest speakers each month and have different topics being discussed.

Community Garden – Growing Season is coming and we will be preparing to start our seedlings!

Ribbon Skirt Making Workshop- Will be teaching participants the teachings behind the ribbon skirt and meaning it has to our women. It will be 4-Day workshop facilitated by Leanna Marshall- March 28th & 29th 2020

Grandfather & Grandmother Pipe Workshop- Will be learning the tradition teaching behind the pipes as well as learning how to carve and make your own.

Safe Food Handling- The Level 1 Food Safety Course, offered during one seven-hour session, provides all the basics of safe food handling, preparation and storage

Smart Serve- Smart Serve is the Government Certification required by law to sell or serve alcohol in Ontario. This program is designed for servers, bartenders, hostesses, food and beverage managers, or anyone who is involved in an event where alcohol is served.

Construction Craft Worker Program- 7 week in class program, with completion you will get your CCW 1 certificate and become a member of Liuna 607. You will learn site preparation and cleanup, setting up and removing access equipment, and working on concrete and masonry, steel, wood and pre-cast erecting projects. They handle materials and equipment, and perform demolition, excavation and compaction activities. Once you've completed your in class you will be doing a practical portion which will be assisting in the build of 4 little houses.

A-Z/ D-Z Truck Driving Program- 5 week in class program, with completion will get certified through Taranis. Will be learning defensive driving, loading and securing goods/ cargo, the health and safety for when driving trucks, WHMIS and will be given time to complete hands on practical's

Heavy Equipment Operator – 5 weeks in class program, must be over 18 years of age. When completing this course you will be certified and educated in the surface miner common core, able to operate rubber tire backhoe, bulldozer, excavator & forklift

Podcasting / Audio Journalism- this program will give you a better look at podcasting and audio recording when in the journalism field.



FORT WILLIAM FIRST NATION

FORT WILLIAM FIRST NATION SOCIAL SERVICES



ODSP

Ontario Disability Support Program

ONTARIO DISABILITY SUPPORT PROGRAM WILL BE

AT OUR OFFICE ON:

FEBRUARY 20TH, MARCH 4TH & 19TH

FROM

1:00 TO 4:00

**FORT WILLIAM FIRST NATION
PRESENTS
A CANCER STUDY
FOR FWFN MEMBERS**



COMMUNITY INFORMATION SESSION

MONDAY, MARCH 2, 2020

6:00PM-9:00PM AT THE COMMUNITY HALL SMOKING SIDE

**FEATURED
SPEAKERS**



**Dr.
Melanie
Jeffrey**



**Dr..
Micheal
Anderson**

The presentation is about the upcoming Cancer Study for FWFN
Input from members is appreciated

***DATE
CHANGE***

**SOUPS AND SANDWICHES
PROVIDED
DOOR DRAW *ATTENDANCE
REQUIRED***

FORT WILLIAM FIRST NATION PRESENTS

DR. ALBERT'S LUNG STUDY

COMMUNITY INFORMATION SESSION

MARCH 2, 2020
**AT THE COMMUNITY
CENTRE**

PRESENTATION FOR AN UPCOMING
MEDICAL STUDY ON LUNGS
6:00PM TO 9:00PM

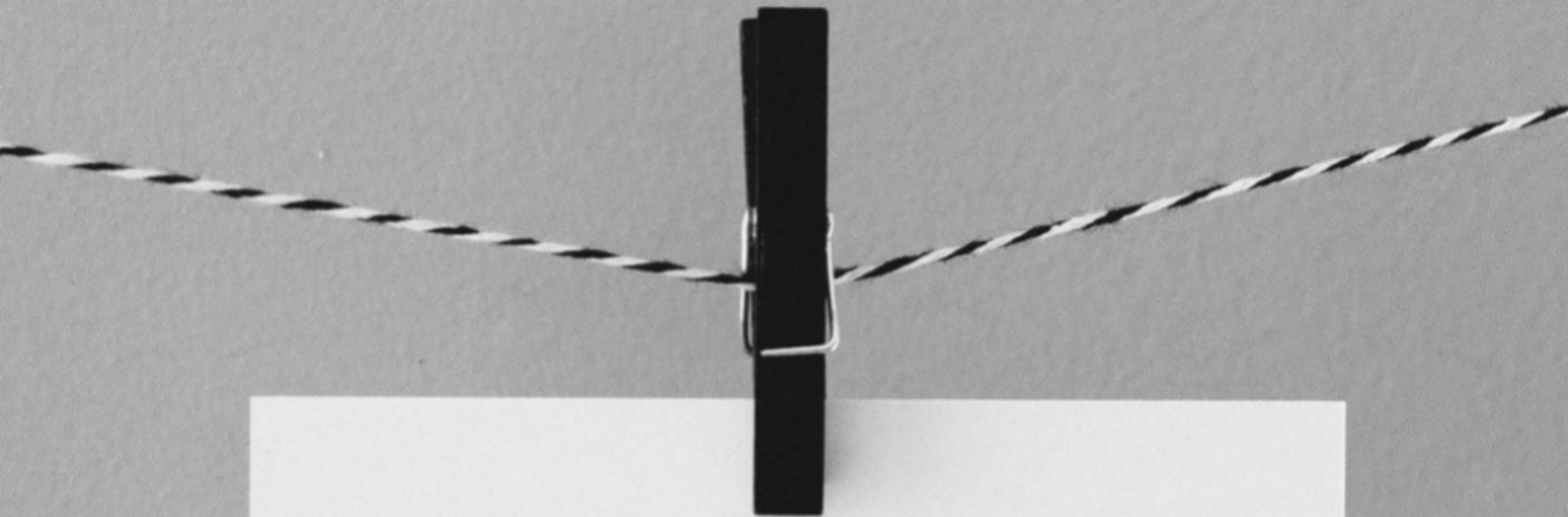
**DATE
CHANGE**



**SOUPS AND
SANDWICHES
PROVIDED**

**DOOR DRAW
*HAVE TO BE IN
ATTENDANCE***

FRIENDLY REMINDER



**PARENTS MUST ACCOMPANY THEIR
CHILDREN TO THE HEALTH CENTRE'S
MONDAY NIGHT FAMILY PROGRAM**

**THANK YOU FOR YOUR
CO-OPERATION,
FAMILY SUPPORT WORKERS**

FWFN HEALTH CENTRE EASTER

BAZAAR

JOIN US ON

SAT. MARCH 28, 2010

1:00 PM - 3:00 PM

SPECIAL APPEARANCE BY THE EASTER BUNNY.

**FOOD-BINGO-DOOR PRIZES-PENNY AUCTION
TICKET TREE-HAMPERS-BOUNCY CASTLES**

FWFN COMMUNITY CENTRE

FOR MORE DETAILS PLEASE CALL 622-8802

FOR COMMUNITY MEMBERS AND REGISTERED MEMBERS ONLY!!!



FORT WILLIAM FIRST NATION

Join us for an
EGG - STRAVAGANZA
AND
Easter Brunch
SUNDAY MARCH 29TH 2020
@11:00AM

EASTER EGG HUNT. KIDS ACTIVITIES. PRIZES & TONS OF FUN!
LOCATION: FWFN COMMUNITY CENTRE



IF YOU HAVE ANY QUESTIONS PLEASE CALL 622-6791



Fort William First Nation Health Centre

Do you need extra hours for high school???

We are looking for volunteers for our up-coming
event-**Easter Bazaar**

DATE: SATURDAY MARCH 28, 2020

TIME: 1:00 P.M -3:00 P.M

PLACE: COMMUNITY CENTRE



Please contact the Health Centre @ 622-8802

How to Protect Yourself from the Flu

Don't assume it's too late to get the flu shot. You should still take necessary precautions to prevent it. Before learning about the preventive tips, it is important to understand the flu itself

Flu season is not over yet, it can last as late as May. If you or someone you know has come down with the flu, you're probably aware that the flu virus can be harsh.

Flu viruses spread mainly by tiny droplets that travel through the air when people who have the flu cough, sneeze or talk. The flu spreads quickly and is highly contagious.

The flu is a respiratory illness caused by flu viruses. Flu viruses are classified into three groups: A, B and C. Influenza A and B are the most common and are responsible for the annual seasonal flu as well as the occasional pandemics linked to new strains and subtypes.

Symptoms of the flu include:

- Fever
- cough
- sore throat
- runny or stuffy nose
- muscle or body aches
- headaches
- fatigue
- Some people may have vomiting and diarrhea, though this is more common in young children than adults.

While the symptoms may be similar to those of the common cold, they are usually more severe with the flu.

There are several preventive measures that can protect you and your family from the flu.

- wash your hands often with soap and water for at least 30 seconds
- avoid touching your eyes, nose, or mouth with unwashed hands
- avoid close contact with people who are sick
- stay home when you are sick
- clean and disinfect objects and surfaces

Wash Your Hands Often to Stay Healthy

Handwashing is one of the best ways to protect yourself and your family from getting sick. Learn when and how you should wash your hands to stay healthy.

You can help yourself and your loved ones stay healthy by washing your hands often, especially during these key times when you are likely to get and spread germs:

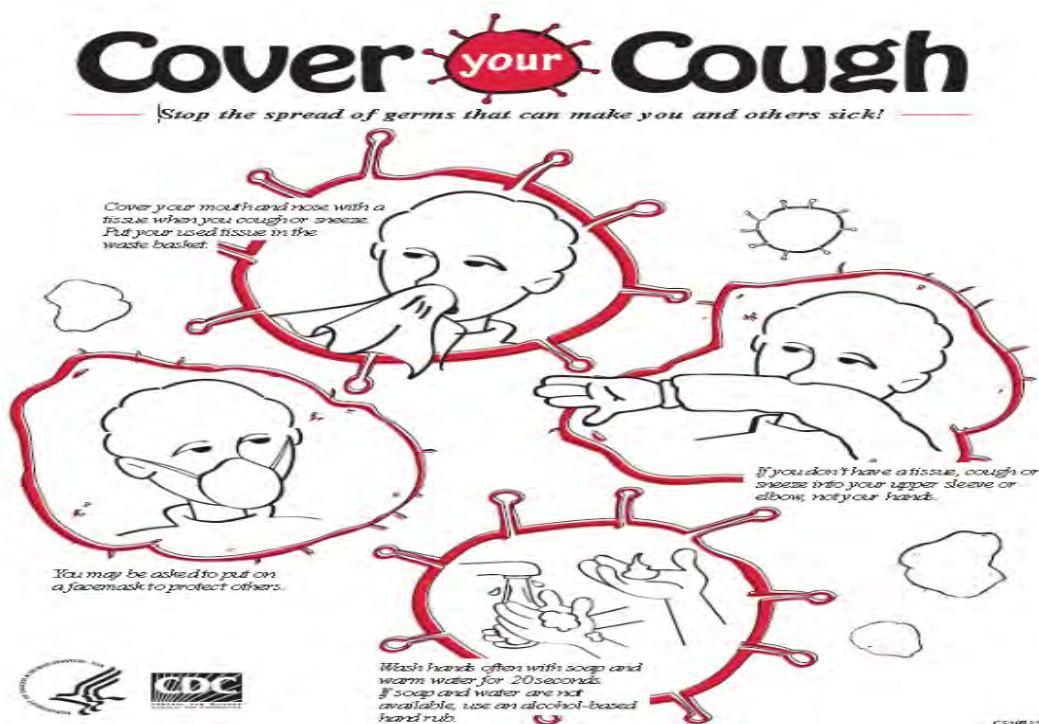
- Before, during, and after preparing food
- Before eating food
- Before and after caring for someone who is sick with vomiting or diarrhea.
- Before and after treating a cut or wound
- After using the toilet
- After changing diapers or cleaning up a child who has used the toilet
- After blowing your nose, coughing, or sneezing
- After touching an animal, animal feed, or animal waste
- After handling pet food or pet treats
- After touching garbage



If soap and water not available, use an alcohol-base hand sanitizer.

What is the correct way to sneeze or cough to avoid spreading germs?

1. Always carry a tissue or handkerchief to cover your mouth or nose.
 2. Cough or sneeze into your elbow, if you don't have a tissue.
 3. Turn away from people when coughing or sneezing to avoid contaminating others.
 4. If you are in a crowd and cannot turn away, cough or sneeze downwards towards your feet.
 5. If you are having a coughing or sneezing episode, excuse yourself from the room until it subsides.
- In addition, washing hands and/or use of antibacterial hand gel immediately after blowing one's nose is critical to help stop the spread of germs.



Media Release

FOR IMMEDIATE RELEASE
On February 19, 2020



TBDHU Begins Serving Seniors Through the Ontario Seniors Dental Care Program

The Thunder Bay District Health Unit is now offering free routine dental care services to eligible low-income seniors. These services are available through the Ontario Seniors Dental Care Program (OSDCP) in collaboration with dental providers in Thunder Bay and District.

"Many of the individuals receiving service through the OSDCP have not had the ability to regularly see a dental provider in years due to access barriers such as cost," said Carolyn Tait, Manager of the Oral Health Program at the TBDHU. "Some are experiencing discomfort, broken dentures, and even pain and infection. This has a significant impact on quality of life. Good oral health is vital to overall health and chronic disease prevention."

To qualify for the OSDCP, individuals must meet the following criteria:

- Be an Ontario resident aged 65 and over
- Have a net income of \$19,300 or less for a single person, or
- Have a combined net income of \$32,300 or less for a couple (only the applicant must be 65 years or older)
- Have no other dental benefits (e.g. private insurance or other government program)

A list of frequently asked questions are available on the Health Unit's website at TBDHU.COM/seniorsdental. Seniors who meet the criteria can apply for a dental card by visiting Ontario.ca/SeniorsDental or by contacting the Health Unit's Oral Health Program in person or by phone at 625-5900 or Toll Free at 1-888-294-6630. Health unit staff are available to answer questions as well as provide enrollment assistance. This program is open to individuals living in Thunder Bay as well as the surrounding district communities.

As the health unit continues to develop the Seniors Dental Care Program, efforts will be made to investigate adding additional services, including denturists, specialists, and expansion to all district communities.

-30-

For more information - Health Unit Media: news@tbdhu.com.



GOOD FOOD BOX

March Good Food Box!

Large Family Box \$25

Small Single Box \$15

**Payment can be made 2nd floor reception at
Band office before march 5/2020**

****Food boxes contain various fresh fruit and
vegetables****

**Pick up March 19/2020 after 3pm at the Health Centre.
If you have any questions or concerns you can call Julie Fair
at 622-8802**

FWFN EMPLOYMENT & TRAINING

SAFE FOOD HANDLING

Date: March 26 – 27, 2020

Time: 9am – 4pm

Where: Niigaanaadba Adult Education Centre



Level 1 Food Handling

- Offered in one 7-hour session
- Provides all the basics of safe food handling, preparation & storage

Content covered will include;

- Public Health Regulations
 - Their Roles & Responsibilities
 - Receiving, storing, preparing, serving and dispensing food.
 - Hazard Analysis Critical Control Points (HACCP) Program

SMART SERVE



The Smart Serve Responsible Alcohol Beverage Sales & Service Training Program is approved by the Alcohol and Gaming Commission of Ontario (AGCO) as the only responsible alcohol training program for Ontario. Smart Serve is a dedicated advocate for a safer and healthier Ontario. Program updates include attention to patrons use of cannabis use

Date: March 25, 2020

Time: 9am – 4pm

Where: Community Centre

TO REGISTER CONTACT:

Hailey MacLaurin: (807) 6226791

Email: haileyMaclaurin@fwfn.com

Dawn McKay: (807) 6226791

Email: dawnmckay@fwfn.com



F O R T W I L L I A M F I R S T N A T I O N

JOB POSTING

Position Title: **Accounts Receivable Clerk – Permanent Full-time Position**

Position Description: The Accounts Receivable (A/R) Clerk is directly responsible for performing data entry and related duties in posting accounts receivable payments. This includes maintaining ledgers, credit balances, and resolving account irregularities.

Major Responsibilities:

- Collaborate with the Controller or Director of Finance and Administration to maintain collection goals and general A/R performance levels.
- Post and reconcile customer payments to general ledgers.
- Post A/R data to profit/loss reports, balance sheets, income statements, and other documentation.
- Review all credit balances, refunds, and adjustments, and apply adjustments and/or corrections to invoice records.
- Ensure the strict confidentiality and privacy of financial records as they relate to the organization and its customers.
- Form collection strategies to mitigate customer objections to making timely A/R payments.
- Investigate collection problems and advise customers on A/R policies and procedures.
- Make arrangements for payment of outstanding and late accounts; escalate transfer to collection agency as necessary.
- A full job description is available upon request.

Qualifications:

- High school diploma or GED
- Accounting experience is considered an asset
- Experience in gathering data, compiling the proper information, and preparing financial reports.
- Computer literacy
- Effective attention to detail and a high degree of accuracy.
- Criminal Records Check required.

Salary: To be negotiated.

Closing Date: Applications, consisting of a cover letter & resume with three references, must be received by **4:00 p.m. on Friday, March 13, 2020**. Please direct your application to the attention of:

Donna Mullen
Human Resources Assistant
P: 807-623-9543 ext. 806
Email: donnamullen@fwfn.com

When hand delivering, ensure that your application is date stamped and a copy provided to you.

We appreciate all applications. Only those selected for an interview will be contacted.



F O R T W I L L I A M F I R S T N A T I O N

JOB POSTING

Position Title: Community Planning Coordinator
Full Time - 2-year contract (with possibility to permanent)

Position Description: This position will coordinate Fort William First Nation's Comprehensive Community Plan (CCP), including hosting engagement sessions, organizing data, and coordinating the CCP project with support from the Advisory Committee and Band Staff.

The position will be responsible for overseeing the planning and overall coordination, marketing and provision of ongoing communication with a CCP Planning Team, Administration, Chief and Council, Community members including men, women, youth, elders, and all family groups. The position will need someone who has communication, coordination and facilitation, and reporting skills. Must be energetic and personable with a strong knowledge of Fort William First Nation territory, culture and history and is passionate about bringing the voice of the community forward to create a great vision for our people.

Major Responsibilities:

- Bring creative energy and approach to facilitating comprehensive community plan
- Coordinate and assist with facilitating CCP process and community engagement
- Explore the community's priorities and opportunities
- Develop Engagement and Communications Strategy
- Work with Chief and Council, Staff, and Community Planners at Nishnawbe Aski Development Fund to design and implement the CCP process
- Review background information and previous planning
- Coordinate and host any of the following initiatives: information sessions, community meetings, focus group sessions (youth, elder, men and women), and/or creation of community survey
- Review information from meetings and create drafts of the CCP
- Writing, researching, analyzing, communications with staff and Chief and Council and funders
- Report back to staff, Chief and Council and to the community
- Identify any additional information needed to complete CCP document

Additional Tasks:

- Research and gather information for compilation into CCP and other community-based processes
- Update Chief and Council on CCP process
- Attend all community events to have strong understanding of community situation
- Review other First Nations CCP's

We appreciate all applications. Only those selected for an interview will be contacted.



F O R T W I L L I A M F I R S T N A T I O N

- Build on understanding of the current situation in the community by talking to as many community members as possible - in their homes, at meetings, for coffee, host workshops, collaborate with other departments
- Discuss visioning and community engagement strategies already in place
- Discuss ideas around reserve infrastructure
- Attend training sessions and workshops
- Learn about and host a variety of information sessions about what a CCP is

Qualifications:

- Grade 12 or equivalent
- Must be fluent in Ojibway and English
- Ability to be neutral and listen to the community and Elders
- Computer and social media literate (MS word, Excel, Power Point)
- Excellent organizational skills
- Willingness to be creative and open to different ways of engaging the community
- Willingness to learn new skills and attend CCP training sessions and workshops
- Excellent written and verbal communication skills
- Independent and also a willingness to learn from team
- Experience hosting community events or meetings is preferred
- Strong knowledge of Fort William First Nation's structure, territory, culture and history
- Flexible Schedule
- Must have Driver's Licence and own vehicle.
- This position will be subject to a criminal records check.

Salary: To be negotiated.

Job Posting Closing Date: Applications, consisting of a cover letter and resume with three (3) references, must be received by **4pm on Friday, March 13, 2020**. Please direct your application to the attention of:

Donna Mullen

Human Resources Assistant

Ph: 807-623-9543 ext. 806, Fax: 807-623-5190

Email: donnamullen@fwfn.com

We appreciate all applications. Only those selected for an interview will be contacted.



F O R T W I L L I A M F I R S T N A T I O N

JOB POSTING

Position Title: Project Coordinator – Part-time
Six month contract

Position Description:

Under the supervision of the Health Manager, the Project Coordinator will work along with the Cultural and Recreation Coordinator on a part-time basis with a wide range of duties for the design of a Red Jingle Dress to be displayed at our Annual First Nation pow-wow honouring our Missing and Murdered Women , Girls and LGBTQ2S families.

Major Responsibilities:

- Coordinate subsequent meetings pertaining to MMIWG and LGBTQ2S families and survivors within FWFN First Nation.
- Coordinate and follow up on meetings of the project.
- Coordinate with supportive collaterals and resources during interviews, and have knowledge of regional supports available. This may include Elder supports, therefore the incumbent must be familiar and knowledgeable of Elder protocols when approaching Elders for support.
- Work with other organizations and resources that may be having gatherings or events of MMIWG and LGBTQ2S families to determine if families want to share their stories and make connections with other families affected.
- Develop a project work plan that identifies all project activities: including budget, key deliverable dates, and regularly review
- Coordinate the steps required for the development of the memorial monument
- Coordinate community forums, Sharing Circles and Feasts.
- Complete all activities identified in the 6-month project Contribution Agreement.
- Draft correspondence and briefing notes related to the project as required.
- Submit project travel and accommodation requests as required in a timely manner.
- Respond to external and internal inquiries regarding the project.
- Other tasks as assigned.

Qualifications:

- Preference will be given to FWFN Post-Secondary Students or candidates who, possess a Certification from a recognized college or technical institute or a combination of two years related experience and/or education/training.



F O R T W I L L I A M F I R S T N A T I O N

- Possess some Trauma Informed Training and/or Grief & Loss or a combination of both.
- Group facilitation skills.
- A strong and full understanding of the issue of Ontario's First Nations MMIWG & LGBTQ2S, including knowledge about the MMIWG National Inquiry and its Calls for Justice.
- Knowledge of First Nation culture, history, and issues.
- Excellent administrative/general office procedures, computer and office equipment, and research capabilities.
- Effective time management and reporting to meet deadlines.
- Demonstrated sound judgement, and capability to maintain confidentiality at all times.
- Excellent interpersonal skills, demonstrates empathy, and ability to work cooperatively as a part of an interdisciplinary team of professionals.
- Ability to communicate effectively, both in written and verbal forms.
- Demonstrated ability to work independently with minimal supervision.
- Proficient in using Microsoft office programs –Word, Excel, Power Point and Outlook.
- Adhere to FWFN's policies and procedures
- Possesses a valid Class G Driver's License and vehicle, work flexible hours, and travel upon request
- This position requires a satisfactory Criminal Record Check
- Maintain confidential client files according to Fort William First Nation policies and procedures.
- A full job description is available upon request.

Salary: To be determined.

Job Posting Closing Date: Applications, consisting of a cover letter and resume with three (3) references, must be received by **4pm on Friday, February March 6, 2020**. Please direct your application to the attention of:

Donna Mullen, HR Assistant
Email: donnamullen@fwfn.com
P: 807-623-9543 ext. 806, Fax: 807-623-5190

When hand delivering; ensure that your application is date stamped and a copy provided to you.

We appreciate all applications. Only those selected for an interview will be contacted.



F O R T W I L L I A M F I R S T N A T I O N

JOB POSTING

Position Title: Tollgate Worker- Seasonal Position
Three (3) Part-Time Positions
One (1) On-Call Position

Major Responsibilities:

- Collect toll fees, make appropriate change if needed, provide entry tickets/receipts, direct visitors and answer questions.
- Ensure daily paperwork related to visitor numbers, ticket numbers, and end of night cash deposit is complete each shift.
- Count and balance currency, coin, and cheques in cash drawers at end of shifts, and calculate daily transactions using computers, calculators, or adding machines.
- Clean/tidy toll gate building and surrounding outside area at the end of each shift.
- Other duties as may be assigned.

Qualifications:

- Ability to work well alone under limited supervision.
- Ability to interact with the public in a positive, friendly manner
- Good problem-solving skills
- Able to work evening and weekends as needed
- This position is subject to a criminal records check.

Job Posting Closing Date: Applications, consisting of a cover letter and resume with three (3) references, must be received by **4pm on Friday, March 13, 2020**. Please direct your application to the attention of:

Donna Mullen
Human Resources Assistant
P: 807-623-9543 ext. 806
E: donnamullen@fwfn.com

When hand delivering; ensure that your application is date stamped and a copy provided to you.

We appreciate all applications. Only those selected for an interview will be contacted.



Nokiiwin
TRIBAL COUNCIL

FREE LEGAL ADVICE

**For Fort William First Nation Members & other
Nokiiwin members**



March 2nd, 1:00- 4:00

(Date and time subject to change)

**Clinic will be held at the Community Centre
(In the Employment and Training Meeting Room)**

**LEGAL INFORMATION PROVIDED ON CRIMINAL
LAW, FAMILY LAW, GENERAL INQUIRIES ABOUT
THE LEGAL SYSTEM & COURT PROCEEDINGS**

To schedule an appointment contact:

Renee Pervais (807) 623-9543

ReneePervais@fwfn.com

***WALK INS ARE ALSO
WELCOME***



NOKIIWIN & FORT WILLIAM FIRST NATION
PRESENT:

LANGUAGE CAFE

**Monday March 23, 2020
5pm to 7pm
at the Youth Centre**

The Education Department is hosting a language program evening. Come out to prepare a light meal & have fun learning a few Ojibwe words!

ONLY 30 SPOTS AVAILABLE

RSVP to Brittany Collins at 807 623 9543 ext 205
or education@fwfn.com



**Fort William
First Nation**

2020/2021 POST SECONDARY APPLICATIONS

2020/2021 Post-Secondary
Applications are now available.

Please pick up at the office at
reception OR email
education@fwfn.com
to request an application.

EVERY student must apply each year.

The deadline to submit the application
is Friday May 29, 2020 by 4pm.

For more information, contact:

Brittany Collins

Education Assistant

623.9543 ext 205

education@fwfn.com

FULL MOON CEREMONY (March)

SUGAR MOON (Ziisbaakdoke-Giizis)

A time for women to come together to honour Grandmother Moon and ourselves; to pray for renewed strength, guidance, and direction in our lives; to pray for all of our families, our communities, and whatever else we may be having difficulty with, in our lives.

ALL WOMEN WELCOME!!!

When: Wednesday, March 11, 2020

Where: 910 Chippewa Road, (over James St. bridge, right at Bannon's).

Time: 5:00 ish 😊

Please bring a skirt, warm clothes, yellow cloth and some tobacco for your tobacco tie(s). We will be having the Ceremony inside but will be burning our ties outside, SO DRESS WARM!!!

Meegwetch!!!

Hope to see ALL you beautiful ladies at the Full Moon Ceremony!!!

Questions??? Call me at 252-5392

HEALTH CENTRE'S EVENTS FOR MARCH BREAK 2020

MON.
MAR. 16

Movie-ONWARD at Silvercity
pick up @ 12:45pm SHARP!

Sleigh Ride at Gammondale
pick up @ 10:30am SHARP!

WED.
MAR. 18

FRI.
MAR. 20

Swimming at the Complex
pick up @ 12:30pm SHARP!

-Register by March 11, space is limited! No late registrations!

-Parents MUST attend!

-Lunch and/or snacks will be provided!

-Bus pick-up will be at the Community Centre!

-Specify event(s) on registration form and return in person to

Health Centre reception or by email: healthreception@fwfn.com



MARCH BREAK

Afternoon Movie

MARCH
16
Monday

12:45pm – 4:30pm

Register by MARCH 10th deadline!!!

Buses will be loading at the Youth Center. Please be there by 12:45pm SHARP!

Children must be accompanied by an adult!

Register @ Health Centre Reception

Phone: (807) 622-8802

REGALIA REGISTRATION

WHEN

Thursday March 12th
and 26th
5:30pm – 7:30pm

WHERE

Culture Room
Community Hall



13YRS AND
YOUNGER
MUST
ATTEND
WITH
PARENT

COMMUNITY
MEMBERS
ONLY

FOR MORE INFO

Contact Gail R Bannon at
gailrbannon@fwfn.com or
Charlene Bannon at
charlenebannon@fwfn.com

YOUTH AND
SOCIAL
DEVELOPMENT

CULTURAL
DEPARTMENT



THUNDER BAY NORTH HARBOUR WORKING GROUP – AREA OF CONCERN

If you missed the presentation from the North Harbour Working Group on the Thunder Bay Area of Concern (AOC) on Monday, February 24th at the community center you can still learn about the project and what the shortlisted options are for placement of the enriched organic sediment. You can read through the attached project quick facts, the short-listed options and the comments page. Hard copies of all of these can be found by contacting Michelle Galoni – Waste Management Coordinator at MichelleGaloni@fwfn.com or by visiting the Economic Development office at 100 Anemki Drive, Suite 106. There is still time to provide your comments and feedback on where you think the contaminated sediment from the Thunder Bay North harbour should go. Please have all comment forms filled out and given to Michelle by March 27th at 12pm.



PROJECT QUICK FACTS

- Thunder Bay's harbour on Lake Superior is one of 43 areas of concern identified through the 1987 Canada-U.S. Great Lakes Water Quality Agreement.
- The North Harbour site has approximately 390,000 m³ of enriched organic sediment (EOS) contaminated with mercury and wood/pulp fibre spread over 26 hectares following decades of industrial pollution.
- Canada is committed to the protection of Great Lakes water quality and ecosystem health. The Canada-U.S. Great Lakes Water Quality Agreement has been an important framework for ensuring cooperative action to restore, protect and enhance the water quality and ecological health of the Great Lakes since first signed in 1972.
- To help meet Canada's obligations under the binational Agreement, the governments of Canada and Ontario cooperate and coordinate their activities to restore, protect and conserve Great Lakes water quality and ecosystem health through a series of Canada-Ontario Agreements dating back over 40 years.
- Environment and Climate Change Canada leads on the implementation of these Agreements on behalf of the Government of Canada; and the Ontario Ministry of the Environment, Conservation and Parks leads on the implementation for the Government of Ontario.
- Canada and Ontario strive to work together to engage all levels of government, First Nations, Métis, non-government organizations, and the public, in the restoration of the Thunder Bay Area of Concern in Lake Superior.
- Under the current Canada-Ontario Agreement on Great Lakes Water Quality and Ecosystem Health, Canada and Ontario are committed to developing a contaminated sediment management strategy for the TBNH. Transport Canada is involved in this project as the majority waterlot owner, and Thunder Bay Port Authority) has the administration and control of the impacted waterlot.

- Environment and Climate Change Canada and Transport Canada, in collaboration with the Thunder Bay Port Authority and the Ontario Ministry of the Environment, Conservation and Parks, have established a Sediment Management Options Working Group to recommend a preferred option to manage contaminated sediments in the Thunder Bay North Harbour Site. Transport Canada and Environment and Climate Change Canada are co-chairing this working group.
- Invitations to join the working group were extended to organizations including managers or operators of the impacted water lots or associated land-based facilities, current or past neighbouring property owners, and those having regulatory or other interests pertaining to the Thunder Bay North Harbour Site. The working group consists of representatives from:
 - Transport Canada (Co-Chair)
 - Environment and Climate Change Canada (Co-Chair)
 - Ontario Ministry of the Environment Conservation and Parks
 - Thunder Bay Port Authority
 - Cascades Fine Papers Group
 - City of Thunder Bay, Infrastructure & Operations
 - Fort William First Nation
 - Lakehead Region Conservation Authority
 - Métis Nation of Ontario
 - Public Advisory Committee (PAC) to the Thunder Bay Remedial Action Plan
 - Red Sky Métis Independent Nation
 - Richardson's International
 - Wilderness North

PLEASE SEE THE THUNDER BAY NORTH HARBOUR PROJECT QUESTIONS AND ANSWERS PAGES FOR FURTHER INFORMATION ON THE PROJECT.



HISTORICAL PHOTO WITH MILL IN OPERATION

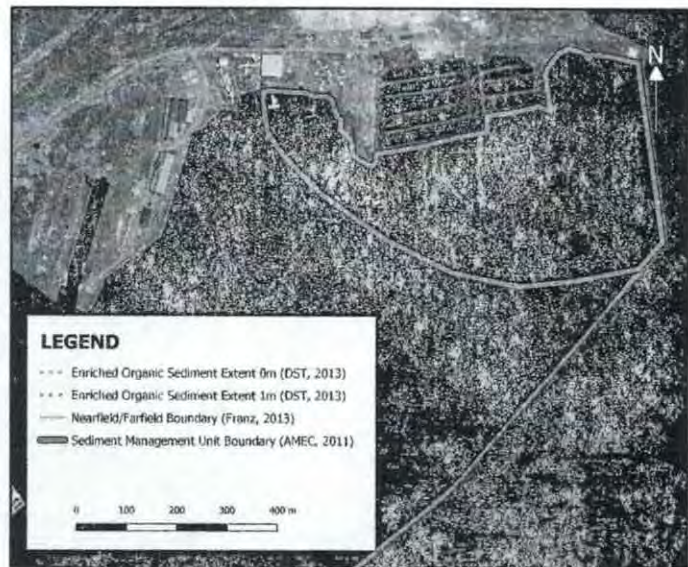
THE SITE

1. What are the primary contaminants at the Thunder Bay North Harbour site?

- The primary contaminants of concern at the Thunder Bay North Harbour site include:
 - Paper fibre/pulp waste
 - Mercury

2. What is the source of the contamination at the Thunder Bay North Harbour site?

- The source of the paper fibre/pulp waste at the Thunder Bay North Harbour site is years of paper making operation. The paper fibre/pulp waste is contaminated with mercury.



3. What is sediment?

- Sediment is the 'mud' found at the bottom of lakes, rivers and ponds.
- Sediment may contain a mixture of mineral grains (sand, silt and clay), decaying organic matter, insects, clams and/or worms ("invertebrates").

4. Why is sediment important?

- Sediment provides habitat for bottom dwelling aquatic invertebrates, which serve as a food source for species higher up in the food chain (i.e. fish).
- Sediment acts as a 'sink' for materials and substances entering aquatic environments, including chemicals, some of which – like methylmercury – are toxic and biomagnify up the food chain.
- Chemicals such as methylmercury, can be transferred from sediment to water, plants, invertebrates, fish, and to fish-eating wildlife and humans.

5. What is Enriched Organic Sediment (EOS)?

- Enriched Organic Sediment is the term used to refer to the contaminated material in Thunder Bay's north harbor. It consists mainly of digested pulp, silt and clay contaminated with mercury.



CONTAMINATION

6. What is mercury?

- Mercury is an inorganic element (like copper, lead, zinc, etc.) derived from rocks, of natural origin and is indestructible.
- Like all metals, mercury exists in multiple forms such as:
 - Dissolved "pure" elemental form (liquid at room temperature, as in thermometers)
 - Gas (mercury vapour)
 - Solid - as part of various minerals (mercury ore).

7. What is methylmercury?

- Methylmercury is the most toxic form of mercury generally found in the environment.
- Under specific conditions, mercury is converted in sediment from mercury to methylmercury, which is available to aquatic organisms where it accumulates in their tissues.
- Methylmercury is persistent, bioaccumulative (accumulates in the tissue of organisms) and toxic.

8. What are the risks from methylmercury?

- The risk from methylmercury can include:
 - Build up in fish and the animals that eat fish. Methylmercury biomagnifies, meaning the concentration increases with each level in the food web. All mercury in fish is assumed to be methylmercury.
 - Long term mercury exposure can affect development and cause neurological impairment in humans.

9. Are fish from Thunder Bay Harbour safe to eat?

- The Guide to Eating Ontario Fish issues advisories for consuming fish caught from Thunder Bay Harbour, depending on fish size and species. The Guide can be found online at:

<https://www.ontario.ca/environment-and-energy/sport-fish-consumption-advisory?id=48258910>

10. Are there other contaminants present at the site related to the former mill operations? Why is the focus on mercury when other contaminants are present as well?

- There are other contaminants present at the site, which include:
 - Paper fibre/pulp waste
 - Copper
 - Lead
 - PCBs
 - Resin Acids & Fatty Acids
- Mercury was selected as the contaminant on which to base management decisions, because:
 - Concentrations of mercury are higher relative to other contaminants.
 - The mercury contamination is most extensive, therefore management of mercury would manage the other contaminants.
 - The ecological risk assessment conducted at the site indicated that potentially unacceptable risk is present for:
 - a. Benthic (lake bottom) communities (from mercury, resin/fatty acids);
 - b. Fish (from mercury, copper, PCBs);
 - c. Fish-eating mammals (from mercury); and,
 - d. Fish-eating birds (from mercury).

11. How does contaminated sediment in Thunder Bay North Harbour affect me?

- Risks associated with the contaminated sediment in Thunder Bay North Harbour are negligible as long as the Guide to Eating Ontario Fish is followed, and frequent direct contact with the sediment or ingestion of contaminated sediment is avoided.

THE PROJECT

12. Why does the contaminated sediment in Thunder Bay North Harbour need to be managed?

- There is a need to manage the contaminated sediment in Thunder Bay North Harbour, as approximately 26 hectares (approximately 31 Canadian football fields) of fish habitat have been destroyed/altered with the mercury contaminated pulp fibre.
- Potential risks have been identified for:
 - Benthic (lake bottom) communities
 - Fish
 - Fish-eating mammals (including humans)
 - Fish-eating birds
 - Industrial/construction workers if they come into frequent contact with the material in Thunder Bay North Harbour.
- Management of the contaminated sediments is a step toward restoring one of several remaining impairments in the Thunder Bay Area of Concern.

13. What are the benefits of the future sediment remediation project?

- There are a number of benefits that would result from a future sediment remediation project, which could include:
 - Restoration of fish habitat for future generations
 - Reduction of risk to the environment and wildlife
 - Contribution to the delisting of Thunder Bay as a Great Lakes Area of Concern
 - Promotion of future development of the Thunder Bay Harbour waterfront

14. Would dredging the contaminated sediment affect drinking water?

- Any future dredging will be conducted with mitigation measures in place to contain any release of material so drinking water will not be affected. Monitoring will be conducted to ensure contaminated sediment is not released from the work site the dredging activity.
- Water samples taken annually around Bare Point municipal drinking water intake indicated that the mercury levels in water outside the breakwater were compliant with drinking water standards.
- Sediment samples taken outside the breakwall in 2009 indicated that mercury levels are compliant with Provincial Sediment Quality Guidelines (Lowest Effect Level).

15. When will the Thunder Bay North Harbour Sediment Management Options Working Group (Working Group) recommend a preferred sediment management option?

- It is anticipated that the Working Group will propose a recommended option by June 2020.
- The Working Group was formed in 2018 to recommend an option to manage the contaminated sediment. The Working Group is considering all previous and new information on management options, represents each organization's interests in the deliberations, and will consider community input in recommending a preferred sediment management.

16. Who is the Working Group making recommendations to?

- The Thunder Bay Sediment Management Options Working Group will make its recommendation in the form of a report to Environment and Climate Change Canada, Transport Canada, the Ontario Ministry of the Environment, Conservation and Parks, and the Thunder Bay Port Authority.

17. What happens after the Working Group makes their recommendation?

- Environment and Climate Change Canada, Transport Canada, the Ontario Ministry of the Environment, Conservation and Parks, and the Thunder Bay Port Authority (and potentially other partners) will select a preferred sediment management option considering the following:
 - Identification of the project lead and contracting authority
 - Ownership, monitoring, maintenance, responsibilities for the containment facility
 - Funding model for engineering design and implementation

**18. When would the sediment remediation project start and finish?
How long will it take?**

- The sediment remediation project is proposed to start once a preferred sediment management option is selected, a detailed engineering design is developed, and project funding and agreements are in place.
- The duration of the construction project depends on the option selected.

19. Will an Environmental Assessment (EA) be done for the remediation project?

- The requirement for an EA is dependent on the sediment management option selection, final confined disposal facility ownership and project details.
- The requirements of federal EA under the Impact Assessment Act and the requirements of a provincial EA under the Environmental Assessment Act will have to be reviewed once a sediment management option has been selected.
- If an EA is required, it would take place during the engineering/design phase of the project, and results of previous studies will be used as appropriate to reduce duplication.

20. How will the integrity of the Confined Disposal Facility (CDF) be ensured in the long-term?

- Long term monitoring and maintenance plans will be developed and carried out to ensure environmental containment of the contaminated sediment. The future site use at the facility will have restrictions to ensure that the integrity of the Confined Disposal Facility is not compromised.

POTENTIAL SOLUTIONS

21. What sediment management options (SMOs) were previously evaluated in 2014/15?

- There were a number of sediment management options previously evaluated, including:
 - Monitored natural recovery
 - Capping
 - Dredging and upland disposal
 - Dredging and disposal in the local Mission Bay Confined Disposal Facility
 - Dredging and disposal in a new on-site confined disposal facility
- Results of 2014/15 SMO assessment indicated that dredging and disposal at an on-site confined disposal facility and dredging and disposal at the Mission Bay confined disposal facility ranked at the top.

22. Has incineration been considered?

- Incineration was considered and found not to be a feasible option due to:
 - High costs related to incinerating enriched organic sediment (low fibre density, clay, low heat value)
 - Risks associated with vaporized mercury during incineration
 - Potentially high transport costs

23. What options are being evaluated by the Thunder Bay North Harbour Working Group?

- The Thunder Bay North Harbour Working Group is reviewing these options:
 - A. Dredging and disposal at an on-site confined disposal facility (CDF),
 - B. Dredging and disposal at the Mission Bay CDF, and
 - C. Constructing a berm to contain all the enriched organic sediment and then infilling (this option was not assessed in 2014/15 (new in 2018))
- Please refer to the provided factsheets for each option.

COST

24. How much would the Thunder Bay North Harbour sediment remediation project cost?

- Conceptual cost estimates for short listed options range between \$65 million to \$80 million. The cost of the project will depend on the option selected.

25. Who will fund the Thunder Bay North Harbour remediation project?

- Determining potential financial implications to implement the project will not be addressed by the Working Group.
- As part of the sediment management option selection process, the Government of Canada, the Ontario Ministry of the Environment, Conservation and Parks and project partners will work together to develop a funding model to implement the project.

FOR MORE INFORMATION

26. How does the public access information on the recommendation of the sediment management options?

- Background reports and additional information are available, and will continue to be posted, on the InfoSuperior website:
<http://rap.infosuperior.com/northharbour/>

27. Who can I contact to discuss the project?

- Key contacts are provided in the table below:

Name and Title	Organization	Contact Information
Roger Santiago (Working Group Co-Chair) Head, Sediment Remediation Unit Great Lakes Areas of Concern	Environment and Climate Change Canada	roger.santiago@canada.ca Tel: (416) 739-5876
Tera Yochim Hope (Working Group Co-Chair) Regional Environmental Advisor, Environment and Engineering	Transport Canada	tera.yochimhope@tc.gc.ca Tel: (416) 952-0501 Alternate Contact: Monique Mousseau (Regional Manager - Environment and Engineering) monique.mousseau@tc.gc.ca
Dawn Talarico Great Lakes Advisor	Ontario Ministry of the Environment, Conservation and Parks	dawn.talarico@ontario.ca Tel: (807) 629-2678
Guy Jarvis Director of Engineering and Harbour Master	Thunder Bay Port Authority	guy@tbport.on.ca Tel: (807) 345-6400

THANK YOU FOR YOUR PARTICIPATION AND INPUT!

We are interested in hearing any comments you may have associated with this project. Thank-you for clearly writing your comments and responses to questions in the space provided below.

Please explain your interest in the project.			
Has today's event improved your understanding of the project?			
Which option do you prefer and why? ("1" most preferred; "3" least preferred)			
Option	Description	Ranking	Why?
A	Dredging and Disposal at New Confined Disposal Facility		
B	Dredging and Disposal at Mission Bay Confined Disposal Facility		
C	Construction of an In-place Barrier around the Enriched Organic Sediment with Infilling		
Do you have any additional comments on the North Harbour project?			
Please submit your written comments before leaving the event. If you require more time to comment, please mail/e-mail the comment sheet by March 27, 2020 to:		Samuel Pegg Remedial Action Plan Interim Coordinator Mailing Address: RC-3000, Lakehead University 955 Oliver Road, Thunder Bay, ON, P7B 5E1 Tel: 807-343-8514 E-mail: spegg1@lakeheadu.ca	
Or use the online version available at:		https://tinyurl.com/northharboursurvey	

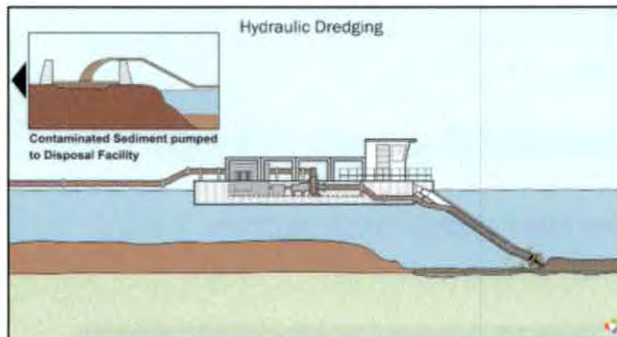
PLEASE CLEARLY PRINT YOUR NAME BELOW:

Name: _____

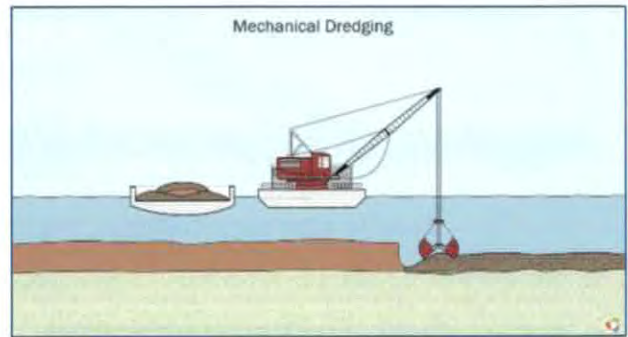
Comments and information regarding this project are being collected to assist the project team in evaluating alternative solutions to the problem. Information collected will be used in accordance with the Freedom of Information and Privacy Act. With the exception of personal information, all comments may become part of the public record.

Environmental Dredging Technologies

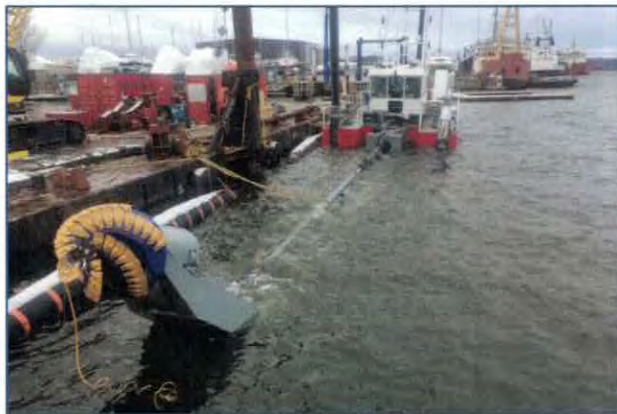
- Hydraulic or mechanical dredging will be utilized to move Enriched Organic Sediment
- Exact dredging methodologies and environmental controls would be determined during the engineering and design phase



HYDRAULIC DREDGE SCHEMATIC



MECHANICAL DREDGE SCHEMATIC



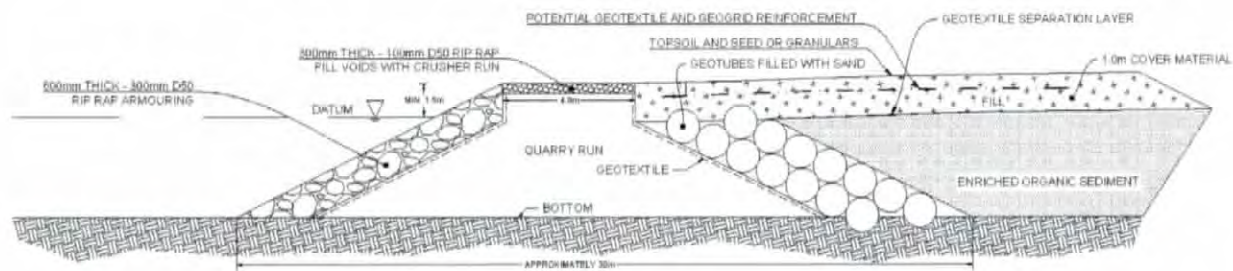
HYDRAULIC DREDGE



MECHANICAL DREDGE

Confined Disposal Facility

- Final configuration and construction methodologies of any Confined Disposal Facility would be determined during the engineering and design phase



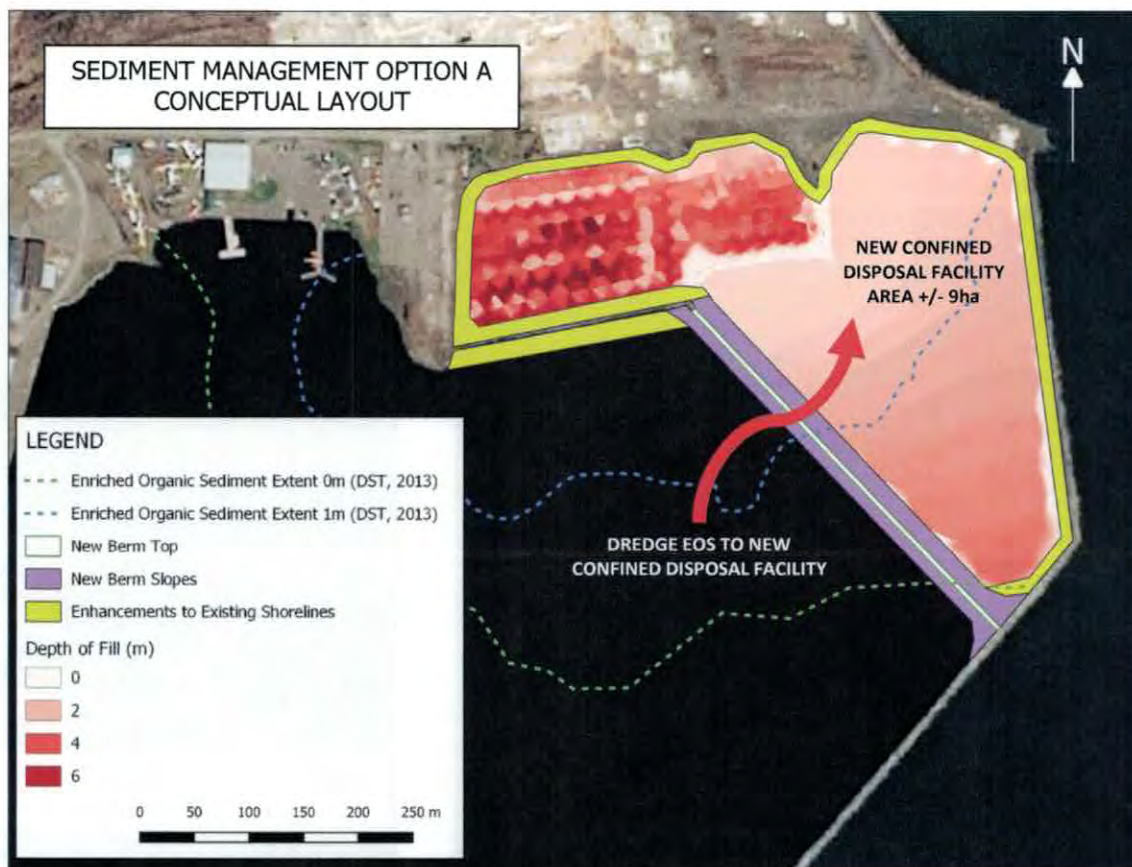
TYPICAL CONFINED DISPOSAL FACILITY BERM AND CAPPING CROSS_SECTION



A Dredging and Disposal at an On-Site Confined Disposal Facility

This sediment management option includes the following:

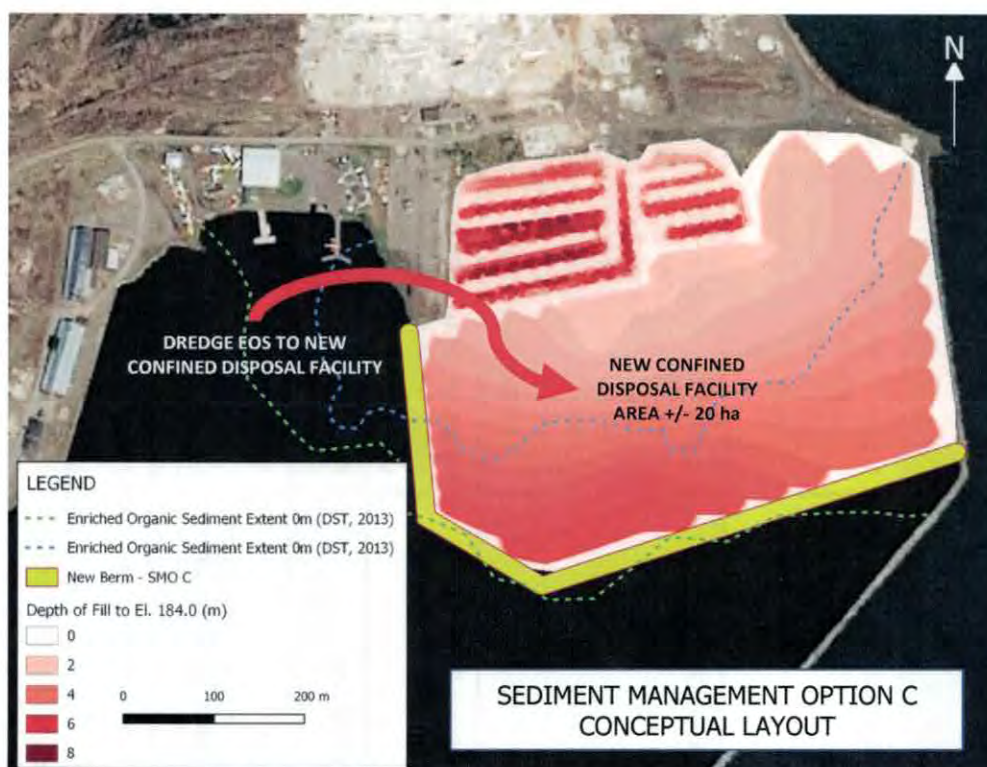
- Constructing an on-site Confined Disposal Facility (may involve the existing lagoon footprint and/or the waterlot)
- Installing environmental controls, such as silt curtains or temporary sheet piling around the work area
- Removing impacted enriched organic sediment (EOS) by mechanical or hydraulic dredging (excavation under water)
- Placing the dredged enriched organic sediment within the Confined Disposal Facility
- Capping the Confined Disposal Facility after the enriched organic sediment has consolidated



C Construction of an In-place Barrier and Infilling

This sediment management option includes the following:

- Installing environmental controls, such as silt curtains or temporary sheet piling around the work area
- Constructing a new berm around the limits of the enriched organic sediment and water lot boundary to the west
- Removing enriched organic sediment (EOS) located outside of the west berm by mechanical or hydraulic dredging (excavation under water)
- Placing the dredged enriched organic sediment within the containment area
- Placing a thin layer of sand to manage marginally contaminated sediments remaining outside of the newly constructed berm
- Infilling and capping the area within the berms over an approximate three year period with a combination of free fill during the first year of infilling operations (such as concrete rubble or dredged materials from maintenance activities in the area) in conjunction with paid material (such as pit run material from local quarries).



Sediment Management Options – Technical Comparison Table

All these options will achieve the project goal of risk reduction in the Thunder Bay North Harbour

Sediment Management Option	A. Dredging and Disposal at an On-Site Confined Disposal Facility	B. Dredging and Disposal at Mission Bay Confined Disposal Facility	C. Construction of an In-place Barrier and Infilling
Advantages	<ul style="list-style-type: none"> No off-site transportation of contaminated sediment Offers potential improvements to North Harbour shoreline 	<ul style="list-style-type: none"> No additional infilling of the harbour as this option makes use of an existing facility Restores the greatest amount of fish habitat amongst all options 	<ul style="list-style-type: none"> Minimizes the need for dredging and therefore minimizes potential contaminant release Offers potential improvements to North Harbour shoreline
Disadvantages	<ul style="list-style-type: none"> Includes filling of approx. 9 hectares of open water area Utilizes existing lagoon footprint as part of a Confined Disposal Facility (the project cost increase for larger in-water footprint without lagoons) 	<ul style="list-style-type: none"> Transport of contaminated sediment from the Harbour's north end to its south end Increase cost and risk due to additional handling of dredged contaminated sediment at both North Harbour and Mission Bay sites 	<ul style="list-style-type: none"> Includes filling of approximately 20 hectares of open water area which will require over 80,000 truckloads of imported clean fill material Results in the greatest amount of fish habitat loss amongst the options
Dredging Required	Approximately 50-70% of the contaminated sediment will require dredging ¹	100%	Approximately 30% of the contaminated sediment will require dredging
Habitat Loss	Approximately 35-50% of the waterlot will be filled ¹	No loss	Approximately 75% of the waterlot will be filled
Cost ³	\$65 million ¹	\$70 million	\$75-80 ² million
Construction Duration	3 years	3 years	4 to 5 years

¹ Final configuration of the Confined Disposal Facility will determine the amount of dredging required and habitat loss. This configuration and associated cost, including the potential use of the existing lagoons as part of the Confined Disposal Facility, will be determined during the engineering/design stage of the project.

² The cost range reflects a blended free/paid infilling scenario and estimates potential sources of free fill at the time of construction. The cost estimate assumes approximately 15% of the infill material could be free clean fill, and the remaining 85% would be paid clean fill materials. Estimated handling, placing, compacting, and transporting costs associated with the free fill material have been included in the project cost.

³ The cost estimates provided have an expected accuracy range of +30% to -15%. These costs assume work begins in 2024, thus the 2019 cost estimate numbers have been escalated to an estimated 2024 start.

Other Notes

- Climate change, including fluctuations in water levels, is an important factor and mitigation considerations would be incorporated into any selected sediment management option through the engineering and design work.
- Long term monitoring plans will be developed for the selected sediment management option.

B Dredging and Disposal at Mission Bay Confined Disposal Facility

This sediment management option includes the following:

- Enhancing or building a new engineered cell within the existing Mission Bay Confined Disposal Facility which is operated by the Thunder Bay Port Authority, located at the south end of Thunder Bay Harbour
- Installing environmental controls, such as silt curtains or temporary sheet piling around the work area
- Removing impacted enriched organic sediment (EOS) by mechanical or hydraulic dredging (excavation under water)
- Dewatering the enriched organic sediment and treating the water as required
- Transporting the dewatered enriched organic sediment to the Mission Bay Confined Disposal Facility and placing it within that facility
- Capping the Confined Disposal Facility after the enriched organic sediment has consolidated

